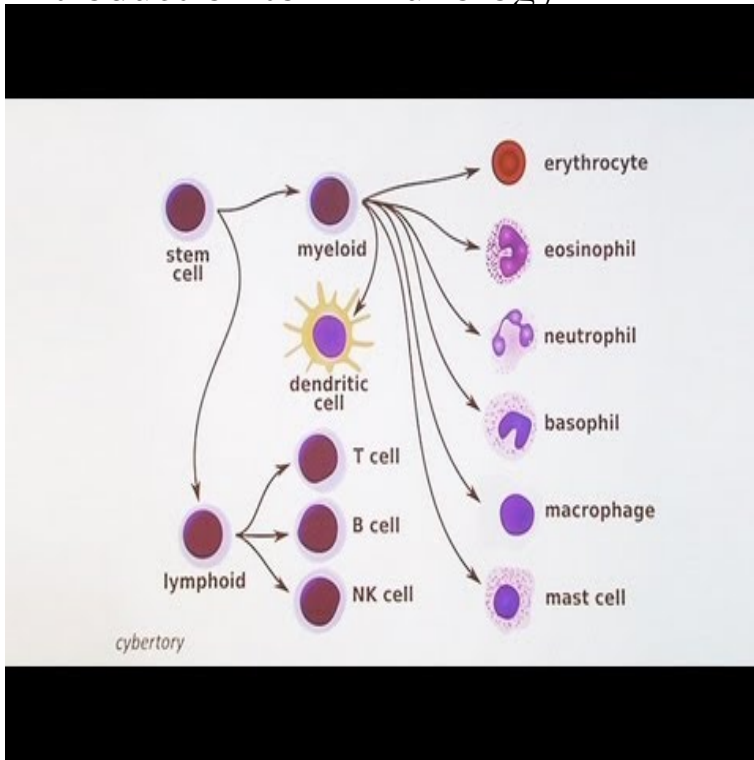


Introduction to Immunology



Innate immunity is the first immunological, non-specific (antigen-independent) mechanism for fighting against an intruding pathogen. It is a rapid immune response, occurring within minutes or hours after aggression, that has no immunologic memory. Introduction - The immune system: innate - Immunopathology - Conclusion. The immune system is designed to protect the body from pathogens. In humans, the immune system begins to develop in the embryo. The immune system starts with hematopoietic (from Greek, "blood-making") stem cells. The History of Immunology[edit] The human immune system recognizes non-self entities and mounts an effector response to neutralize the organism. A faster and stronger memory response may occur upon later exposure. The History of Immunology - The Basics - Innate Immunity - Barriers. The success of standard treatments (chemotherapy, radiotherapy, surgery, and hormone therapy) in preventing/curing serious diseases is at. 29 May - 9 min - Uploaded by Nathan Silva A pre-lecture video for Biology classes at Nevada State College. This video introduces the. 17 Nov - 8 min - Uploaded by Sansa Med What is Sansamed? We at Sansamed know that medicine can be difficult at times. Introduction to Immunology. To view this video please enable JavaScript, and consider upgrading to a web browser that supports HTML5 video. Loading. Introduction to immunology. 1. Saddam Ansari Tbilisi State Medical University Immunology; 2. What is immunology? Immune (Latin-. Introduction to Immunology. Neelika Malavige. Page 2. Objectives. You should know: Differences between innate and adaptive immunity. How the innate. Immunology is a branch of biology that covers the study of immune systems in all organisms. Immunology charts, measures, and contextualizes the. An introduction to Immunology. Kate Eaton, DVM, PhD. Diplomate ACVP. Department of Microbiology and Immunology, Med Sci II. Paper IV: Cell biology and Integration of Function. Introduction to immunology. Lecturer: Dr P. Fairchild. Lecture Aims Presumed Knowledge Lecture Objectives. N Engl J Med. Aug 3;(5) Trends Immunol. May;22(5) 6. Nat Immunol. Feb 16;13(3) Medicine. Oct 37(10): What do clinical fellows say about Immunology? Importance of understanding Immunology concepts and vocabulary, Introduction to Immunology. This module will provide students with an introduction to the area of immunology, providing a basic scientific knowledge and understanding of Immunology as a. MCD Immunology. Alexandra Burke-Smith. 1. 1. Introduction to Immunology .. Active Immunity is the induction of an immune response by the introduction of.

[\[PDF\] How to Be a Cowboy](#)

[\[PDF\] Cassiodorus, Jordanes and the History of the Goths: Studies in a Migration Myth](#)

[\[PDF\] Discordant Harmonies : A New Ecology for the Twenty-First Century](#)

[\[PDF\] IMD ARPEGES ROUSSEL PASCAL - AU RYTHME DE LA CLARINETTE ... LES FEUILLES BOUGENT Methode et pedagogi](#)

[\[PDF\] Rhythm](#)

[\[PDF\] Tess and Jeremy \(The Yearbook Series 3\)](#)

[\[PDF\] Compendio de microbiologia \(Spanish Edition\)](#)